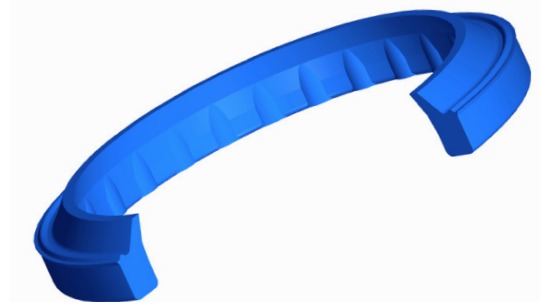


# Wipers





### Type 38

A polyester based material wiper that has been designed to remove heavily deposited materials from the rod surface whilst preventing moisture from entering the groove.

#### Key Features

- Outside crush lip for effective housing seal
- Pressure relief ribs
- Effective scraping lip

#### Key Advantages

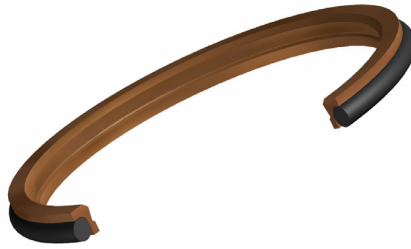
- Maintains constant contact with the rod surface
- Suitable for mining and earth moving applications
- Suitable for scraping ice
- Range can be used with a split housing

#### Typical applications

- Off Highway
- Heavy Duty

#### Key Technical Information

Maximum Speed: 4 m/sec  
(12 ft/sec)  
Temperature Range: -40°C to 120°C  
(-40°F to 250°F)



### Type 335

The Hallite 335 is an O-ring energised double lip wiper designed to exclude dirt from entering the cylinder and collect traces of fluid passing the rod seal.

#### Key Features

- Standard design made from bronze filled PTFE
- Low friction no stick-slip
- High strength machined PTFE wiper

#### Key Advantages

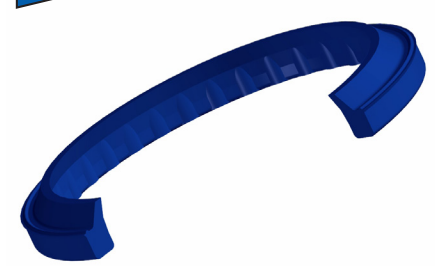
- Wide range of material and size options available
- Low friction - no stick slip.

#### Typical applications

- Machine tools
- Wind Turbines
- Steer Cylinders

#### Key Technical Information

Maximum Speed: 5 m/sec  
(15 ft/sec)  
Temperature Range: -30°C to 100°C  
(-22°F to 212°F)



### Type 520

The Hallite 520 is a polyurethane based material snap-in rod wiper that has been designed to fit Universal style housings in heavy duty applications.

#### Key Features

- 'Crush Lip' and Face Bead' provide effective seal in housing
- Pressure relief ribs
- Effective scraping lip

#### Key Advantages

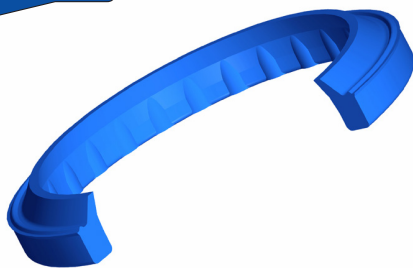
- Moulded ribs provide extra stability and helps prevent pressure trapping
- Suitable for mining and earth moving applications
- Range can be used with a split housing Polyester material alternative

#### Typical applications

- Off Highway
- Mining
- General Duty

#### Key Technical Information

Maximum Speed: 4 m/sec  
(12 ft/sec)  
Temperature Range: -45°C to 110°C  
(-50°F to 230°F)



#### Type 831

The Hallite 831 wiper, moulded in polyurethane for maximum wear resistance, is designed to snap into a standard housing and provide reliable medium duty dirt exclusion.

#### Key Features

- Precision trimmed wiping lip
- Pressure relief ribs
- 'Crush Lip' and Face Bead' create an effective seal on housing

#### Key Advantages

- Moulded ribs provide extra stability and helps prevent pressure trapping
- The wiping lip remains in constant contact for effective removal of contaminants

#### Typical applications

- General Duty

#### Key Technical Information

Maximum Speed: 4 m/sec  
(12 ft/sec)  
Temperature Range: -45°C to 110°C  
(-50°F to 230°F)



#### Type 834

The Hallite 834 is precision moulded in our high performance polyurethane - Hythane® 181, and is designed to snap into a standard housing, whilst providing reliable medium duty dirt exclusion.

#### Key Features

- Pressure relief ribs
- Precision moulded

#### Key Advantages

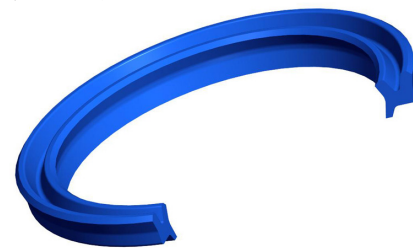
- Moulded ribs provide extra stability and helps prevent pressure trapping
- The wiping lip remains in constant contact for effective removal of contaminants

#### Typical applications

- Medium Duty

#### Key Technical Information

Maximum Speed: 4 m/sec  
(12 ft/sec)  
Temperature Range: -45°C to 110°C  
(-50°F to 230°F)



#### Type 839

The Hallite 839 wiper is precision moulded in Hallite's high performance polyurethane - Hythane® 181 for maximum wear resistance, and is designed to exclude dirt and moisture from entering the cylinder.

#### Key Features

- Twin lip design
- Hard wearing material
- ISO housing range

#### Key Advantages

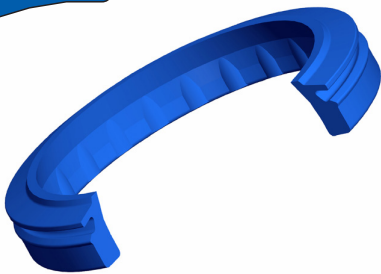
- Twin lip design ensures a drier sealing system
- Range can be used with a split housing

#### Typical applications

- General Duty
- Commonly used in conjunction with PTFE Rod Seals

#### Key Technical Information

Maximum Speed: 4 m/sec  
(12 ft/sec)  
Temperature Range: -45°C to 110°C  
(-50°F to 230°F)



**Type 842**

The Hallite 842 is a polyurethane based material rod wiper designed to prevent the ingress of foreign particles and moisture into the cylinder. The profile has been specially developed for harsh environments, in particular the longwall mining industry.

**Key Features**

- Outside flap on wiping lip for effective sealing
- Pressure relief ribs
- Hard wearing material

**Key Advantages**

- Moulded ribs provide extra stability and helps prevent pressure trapping
- Outside flap covers gland housing, preventing ingress of water and dirt around the outside of the wiper

**Typical applications**

- Off Highway
- Mining
- Heavy duty
- Harsh environments

**Key Technical Information**

Maximum Speed: 4 m/sec  
 (12 ft/sec)  
 Temperature Range: -45°C to 110°C  
 (-50°F to 230°F)



**Type 844**

The Hallite 844 is a polyurethane based material wiper that has been specifically developed for cylinders used in demanding off-highway applications. It is a double lip wiper designed for use with venting U-rings such as the Hallite 663 rod seal.

**Key Features**

- Outside flap on wiping lip
- Textured wiping lip option
- Contamination resistant
- Tolerant to rod deflection

**Key Advantages**

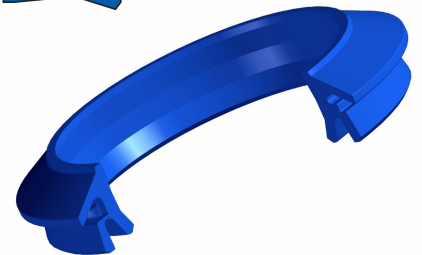
- Other material options provided to extend operating conditions
- Outside flap covers gland housing, preventing ingress of water and dirt around the outside of the wiper
- Textured lip retains boundary fluid

**Typical applications**

- Off Highway

**Key Technical Information**

Maximum Speed: 4 m/sec  
 (12 ft/sec)  
 Temperature Range: -45°C to 110°C  
 (-50°F to 230°F)



**Type 846**

The Hallite 846 wiper is precision moulded in our high performance polyurethane - Hythane® 181 and designed to prevent contaminants from entering the cylinder and collect fluid passing the rod seal, another feature are thin membranes that burst when excess pressure is trapped in the cylinder.

**Key Features**

- Outside flap on wiping lip
- Textured wiping lip option
- Contamination resistant
- Pressure membranes

**Key Advantages**

- Moulded ribs provide extra stability and helps prevent pressure trapping
- Outside flap covers gland housing, designed to prevent ingress of water and dirt
- Trapped pressure is released through bursting membranes
- Textured lip retains boundary lubrication

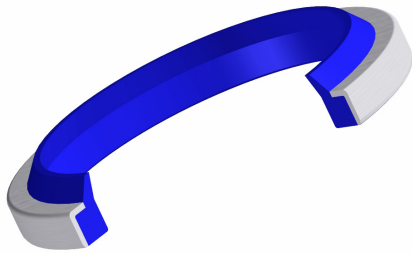
**Typical applications**

- High reach forklift trucks
- Cylinders used in clean environment.
- Machine Tools

**Key Technical Information**

Maximum Speed: 4 m/sec  
 (12 ft/sec)  
 Temperature Range: -45°C to 110°C  
 (-50°F to 230°F)

***“Hallite products, engineered in a wide variety of advanced materials, are chosen by leading manufacturers for their exceptional performance.....”***



#### **Type 860**

The Hallite 860 is a press-fit metal cased wiper, designed for open groove housings. Capable of operating in dirty conditions, the proportions of the polyurethane wiping lip allow it to follow the side movement of the rod and to clear away heavily deposited dirt.

##### **Key Features**

- Easy assembly
- ISO & Asian housing range
- Precision trimmed wiping lip
- Treated metal case

##### **Key Advantages**

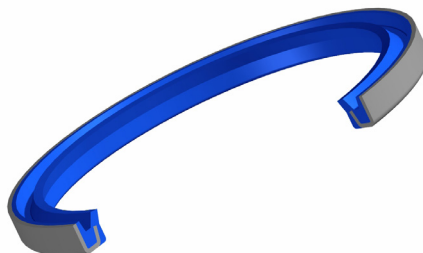
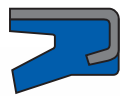
- Metal case treated with a rust inhibitor
- Maintains constant contact with the rod surface
- Suitable for all types of environments
- High performance material provides improved cylinder life

##### **Typical applications**

- General Duty

##### **Key Technical Information**

Maximum Speed: 1 m/sec  
(3 ft/sec)  
Temperature Range: -40°C to 100°C  
(-40°F to 212°F)



#### **Type 862**

The Hallite 862 is a metal cased wiper, designed to press-fit into open groove housings. Capable of operating in dirty conditions, the proportions of the polyurethane wiping lip allow it to follow the side movement of the rod and to clear away heavily deposited dirt.

##### **Key Features**

- Easy assembly
- Precision trimmed wiping lip
- Treated metal case

##### **Key Advantages**

- Metal case treated with a rust inhibitor
- Maintains constant contact with the rod surface
- Suitable for all types of environments
- High performance material provides improved cylinder life

##### **Typical applications**

- General Duty

##### **Key Technical Information**

Maximum Speed: 1 m/sec  
(3 ft/sec)  
Temperature Range: -40°C to 100°C  
(-40°F to 212°F)



#### **Type 864**

The Hallite 864 is a double-lipped metal cased wiper, designed to press-fit into open groove housings. Capable of operating in dirty conditions, the proportions of the polyurethane wiping lip allow it to follow the side movement of the rod and to clear away heavily deposited dirt.

##### **Key Features**

- Easy assembly
- Textured wiping lip
- Treated metal case

##### **Key Advantages**

- Metal case treated with a rust inhibitor
- Two sealing lips proportioned to collect fluid passing the rod seal
- Designed for use with venting U-rings such as the Hallite 663 rod seal

##### **Typical applications**

- Off Highway

##### **Key Technical Information**

Maximum Speed: 1 m/sec  
(3 ft/sec)  
Temperature Range: -40°C to 100°C  
(-40°F to 212°F)



## Hallite Seals

Hallite produces high performance hydraulic sealing solutions for the world's fluid power industry. The company enjoys an enviable reputation for high quality and reliability within the mobile hydraulics, mining, off-highway, construction, agriculture, mechanical handling and automation markets.

Hallite products, engineered in a wide variety of advanced materials, are chosen by leading manufacturers for their exceptional performance in the most demanding, safety-critical high specification applications.

Hallite operations are located in Australia, Brazil, Canada, China, France, Germany, India, Italy, the UK and the USA. All Hallite locations are committed to providing quality seals in the shortest possible time. Hallite combines carefully chosen and managed stocks in local markets, supported by a fast track moulding capability. All locations can now boast a CNC machining cell, branded Hallite Service, which can provide immediate delivery for non-standard and breakdown situations.

Additionally a worldwide network of service partners completes the global presence and ensures the full range of Hallite products is readily accessible.



### UNITED KINGDOM

**Hallite Seals International Ltd.**  
130 Oldfield Road,  
Hampton  
Middlesex, TW12 2HT  
T: +44 (0)20 8941 2244  
F: +44 (0)20 8783 1669  
E: seals@hallite.com

### AUSTRALIA

**Hallite Seals Australia Pty. Ltd.**  
Unit 4, 1273 The Horsley Drive  
Wetherill Park,  
NSW 2164  
T: +61 (0)29 620 7300  
F: +61 (0)29 620 7400  
E: seals@hallite.com.au

### BRAZIL

**Hallite do Brasil Tecnologia em Vedações Ltda.**  
Avenida 5, 1367 - Jd Claret  
Rio Claro - SP,  
13503-254  
T: +55 (0)19 35231859  
F: +55 (0)19 35324805  
E: info@halliteseals.com.br

### CANADA

**Hallite Seals (Canada) Ltd.**  
5630 Kennedy Road,  
Mississauga,  
Ontario, L4Z 2A9  
T: +1 (905) 361 2350  
F: +1 (905) 361 2342  
E: seals@hallite.ca

### CHINA (Shanghai)

**Hallite (Shanghai) Co. Ltd.**  
785 Xing Rong Road,  
Jiading Industrial Park  
Jiading District,  
Shanghai 201804  
T: +86 (0)21 3351 7272  
F: +86 (0)21 3351 7085  
E: hallite.shanghai@hallite.com

### CHINA (Suzhou)

**Hallite Service (Suzhou) Co. Ltd.**  
Plant 1, 82 Jiangpu Road  
Shengpu  
Suzhou Industrial Park  
Suzhou 215126  
T: +86 (0)512 6295 1601  
F: +86 (0)512 6295 1247  
E: hallite.suzhou@hallite.com

### GERMANY

**Dichtelemente Hallite GmbH**  
Billwerder Ring 17  
21035 Hamburg  
T: +49 (0)40 73 47 48-0  
F: +49 (0)40 73 47 48 49  
E: seals@hallite.de

### INDIA

**Hallite Sealing Solutions India Pvt. Ltd.**  
Special Plot #10, 3rd Main,  
1st Stage,  
Peenya Industrial Estate,  
Bangalore - 560 068  
T: +91 (0)80 2372 6000/1  
F: +91 (0)80 2372 6002  
E: seals@hallite.in

### ITALY

**Hallite Italia srl**  
Via Francia 21,  
Loc. Guasticce  
57017 Collesalveti - Livorno  
T: +39 (0) 58 642 8287 / 9734  
F: +39 (0) 58 642 9845  
E: seals@hallite.it

### UNITED STATES

**Hallite Seals Americas**  
50777 Varsity Court  
Wixom,  
Michigan 48393  
T: +1 (248) 668 5200  
F: +1 (248) 668 5210  
E: seals@hallite.us